



Windows into the
UNITED METHODIST CHURCH OF HYDE PARK



Nurture



Outreach



Witness





Hallelujah!

Sing to the Lord a new song.

*Sing His praise in the congregation
of the faithful.*

PSALM 149



Welcome Letter from our Pastor

Dear Brothers and Sisters in Jesus Christ:

The Gospel of Matthew begins with the words “This is the genealogy...” The Good News begins with family and relationships. This is our first introduction to who Jesus will be, for Matthew begins by letting us know from whom he has come. In the following pages we have the genealogy, the family legacy of the United Methodist Church of Hyde Park, and what a family it is!

We come from diverse backgrounds, educations, professions and faith traditions, but we have found a home here in this family of Jesus Christ. Some of us step out in the field of missions, swinging hammers and physically restoring hope from shattered dreams. Others minister through hospitality and the kindness of a smile, restoring human dignity through emotional support and a hot meal. We have folks who gather to help others find their spiritual center in Christ by sharing time and wisdom with our diverse family. There is a place in the United Methodist Church of Hyde Park for everyone to feel welcomed and at home.

Windows Into the United Methodist Church of Hyde Park is more than a directory. It is a multi-dimensional tool for relationship development and Christian witness. Here you can find a place to fit in, or a corner in which to “hang out.” Have a question about who, what, when, where or how? Find it here! Look through these “windows” to see how our church reaches out to our congregation, community and our world in Jesus’ name.

Christ did not call us to be stagnant and sedentary, but to be dynamically engaged in the world, using God’s gifts to celebrate and perfect our world. It really is all in the genes and, therefore, the genealogy.

Our “Windows” directory not only reveals our history, but our present and the dynamic promise for the future of our family of faith.

Whether you are a visitor or a new or seasoned member, welcome to our family, the United Methodist Church of Hyde Park.

Yours in Christ,

A handwritten signature in black ink, appearing to read 'Gregg Gabor'. The signature is stylized and written in cursive.

Pastor Gregg Gabor





Table of Contents

Welcome Letter from Pastor Kregg.....	1
The Origins of Methodism and The United Methodist Church of Hyde Park	3
Worship Schedule	4
Joining Our Church	4
Church and Community Outreach Ministries.....	5
Retreats, Events & Publications for Spiritual Renewal And Growth	8
Fundraisers That Support Church Programs and Missions	9
Sunday School, Bible Studies and Fellowship.....	10
Blessed Connections Ministries.....	11
Sunday Morning Worship	14
Our Connection to the United Methodist Church	14
Our Church Organization	15
Church Conference, Council, Commissions and Committees.....	16
Lay Leadership 2013	19
Our Staff.....	25
Staff Position Descriptions.....	25
Glossary	27



Origins of Methodism and the United Methodist Church of Hyde Park

John Wesley (1703-1791) and his hymn writer younger brother Charles (1707-1788) led a movement to reform the Church of England in the eighteenth century. They were both ordained Anglican priests at Oxford University who, along with other men, sought reform by way of returning to the social gospel of Jesus. Their original intent was to seek the changes within the Church of England.

At first, the term “Methodist” was attempted mockery by fellow students who branded these reformers for the way they used “rule” and “method” to go about their religious life. Instead, John Wesley turned the term “Methodist” into a title of honor and respect. From this point forward “Methodist” retained its name and identity as the movement spread rapidly throughout the British empire, including the new American colonies. Methodist preachers were notorious for their enthusiastic open air preaching, serving the poor, visiting the sick and those in prison.

In 1784 John Wesley ordained preachers for Scotland, England and America, believing that other priests could ordain men, not just bishops. While these actions caused the final split with the Anglican church, it also seeded the rapid growth of Protestant denominations, including an independent American Methodist Church. In the mid-eighteenth century, the English Methodist preacher George Whitefield preached throughout the colonies, significantly contributing to the growth of the American Methodist Church. By the early nineteenth century Methodism was spreading rapidly, including the establishment of colleges such as Boston University.

Disputes over slavery, however, split the church mid-century. The Northern and Southern Methodist Churches were not reunited until 1939. Even then, some strong southern segregationists opposed the merger, consequently forming the Southern Methodist Church in 1940. The official United Methodist Church denomination as we know it (UMC) was the result of a merger between the Methodist Church and the Evangelical United Brethren Church (EUB) in 1968.

Our own United Methodist Church of Hyde Park began in 1828 amid the nationwide wave of revivals called “Awakenings.” Beginning in the home of Alonzo Sellick in Hyde Park, the tiny group of Methodists grew rapidly over the next seventy years. The first church structure at our current location was constructed in 1833 where a growing congregation worshipped until the late 1890’s. The first church building was then torn down due to its deterioration and a new church erected in 1898. This was the basic structure for our current church and its price tag just over \$6,000!

Over the next hundred years and into the twenty-first century, our church expanded. The new enlarged education building and narthex were completed in 2005. President Franklin Delano Roosevelt spoke at the 100th anniversary of our church in 1933. Though he was a member of St. James Episcopal Church to the north, he accepted the invitation to celebrate with us after our own Methodist bishop declined. As a native Hyde Parker in his first term of office, President Roosevelt graced our congregation with his words and his presence on this special occasion. (See the photo which hangs in our narthex).

Our current congregation adheres to the traditions of its founders and strives to uphold its principles. Serving God by serving others as Jesus taught us is central to our Christian mission. The United Methodist Church of Hyde Park welcomes all to our worship services and activities. Membership is encouraged. We hope you will find information in this booklet that will help you begin your journey.

SOURCE MATERIAL

- *Wikipedia, Methodism, pp. 1-30*
- *United Methodist Church of Hyde Park Church and Family Pictorial Directory, 2010*



Worship Schedule

Mid-September to Mid-June

7:45 a.m.....Communion Service
8:45 a.m.....Contemporary Music Service
9:50 a.m.....Sunday School
11:00 a.m.....Traditional Music Service

Mid-June to Mid-September

9:30 a.m.....Blended Service



Joining Our Church

Membership means choosing to belong. At the United Methodist Church of Hyde Park, being a member means belonging to our church family, the body of Christ. We extend an invitation to each person to join us, if you believe in Jesus Christ as your Lord and Savior and if you willingly commit to serve this church with your presence, your prayers, your gifts and your witness.

If you have not yet been baptized, we will arrange this with you personally. New members come to us via different paths - you may be transferring from another United Methodist church, or from another denomination, or by means of profession of faith in Jesus Christ. However you become part of our family, we will love, support, and encourage you in your spiritual journey as a follower of Christ.

For additional information contact Evangelism Commission Chair Claire Nuttall at 229-0684, or Pastor Gregg Gabor at 229-2114.

Church and Community Outreach Ministries



BLOOD DRIVES

Two New York Blood Center drives are held each year, usually in June and January.

Contact Carla Cruger at 229-7771

BRIDGE BUILDERS

Youth and adults repair homes and provide other community services one week during the summer.

Contact Joe Marrine at 229-2958

CAMP HOPE

Youth and adults repair homes in western Maryland for a full week each summer.

Contact Joe Marrine at 229-2958

CHURCH WORK DAYS

All are invited to clean, repair, paint, weed and work on various projects in and around our church complex. These days are also announced throughout the year as noted in the Sunday bulletin, the Messenger, and from the pulpit.

Contact Bob Rua at 229-0964

COAT DRIVE

Clean coats are collected and distributed to children and adults in late fall, in conjunction with the annual Dutchess Outreach Coat Drive.

Contact Terry Temple at 266-4668

COMMUNITY CARES

Church and community members donate and organize holiday dinners and provide gifts to local families in need at Thanksgiving, Christmas and Easter.

Contact Ruth Jones at 889-4933

CROP WALK

Our church participates in the annual local CROP Walk in October. This event raises awareness and funds for hunger relief.

**Contact Regina Calabro at 471-4802
or Jesse Plass at 489-7261**

*“For where two
or three gather in my name,
there am I with them.”*

MATTHEW 18:20

Church and Community Outreach Ministries (*continued*)



HYDE PARK VISUAL ENVIRONMENTAL COMMITTEE

Our youth group works with this local committee to develop, maintain and promote awareness of the local environment by maintaining the town hall and library grounds.

Contact Joe Marrine at 229-2958

JACK'S PROGRAM

(In memory of Jack Dockery)

Homeowners who are church members can get assistance to repair their homes and receive necessary services such as handicap ramps. Volunteers contribute their labor and time. Materials and supplies are provided by the homeowner.

Contact Terry Temple at 266-4668

KAIROS PRISON MINISTRIES

Volunteers visit the imprisoned, bringing home-baked goods and providing spiritual support.

Contact Julius Jones at 889-4933

FOOD PANTRY

Church members volunteer in the weekly food distribution to local families in need. Non-perishable and canned goods are welcomed and in constant need. Items can be left at any time in the box near fellowship hall. Sunday School children bring donations to class on the first Sunday of every month.

HIGHWAY CLEAN-UP

Volunteers collect litter and debris along a two-mile section of Rt. 9 in Hyde Park twice per year.

Contact Mike Temple at 266-4668

HOMELESS SHELTER

(Poughkeepsie)

Volunteers spend the evening with clients and serve them dinner on the third Sunday of each month.

Contact Karen Becker at 229-1006

LUNCH BOX

(Soup Kitchen of Poughkeepsie)

Volunteers from this church serve lunch on the fourth Monday of the month and dinner on the last Wednesday of the month.

Contact Sara Gulbrandsen at 337-4528

*“Always be humble and gentle.
Be patient with each other, making allowance for
each other's faults because of your love.”*

EPHESIANS 4:2.

Church and Community Outreach Ministries *(continued)*

MARK-IT-PLACE

This is a consignment store on Route 9 in Hyde Park, affiliated with our church. Profits are donated to various church and community programs annually.

Contact Dottie Hughes at 229-7486

MEALS-ON-WHEELS

Meals for the elderly and shut-ins are prepared Mondays through Fridays at our church and delivered to residents in the Hyde Park School District by volunteer drivers. Volunteer packers are also needed each day.

To volunteer or receive meals call 229-5896



OPERATION CHRISTMAS CHILD

This “shoebox” project provides Christmas gifts for children around the world, through Samaritan’s Purse.

REBUILDING TOGETHER DUTCHESS COUNTY

On the last weekend in April, our church adopts a home needing renovations, working through the local *Rebuilding Together Dutchess County* organization.

Contact Terry Temple at 266-4668



SALVATION ARMY BELL RINGERS

During the Christmas season, church volunteers join with others to raise funds for local families in need.

Contact Ruth Jones at 889-4933

TRICK OR TREAT FOR UNICEF

Sunday school classes and the youth group collect monetary donations to support children in other countries to overcome poverty, violence, disease and discrimination.

Contact Joe Marrine at 229-2958

VOLUNTEERS IN MISSION

(United Methodist VIM)

Methodist Volunteers in Mission are God’s hands and feet behind disaster response, recovery, and other mission work locally, nationally and worldwide. Members of our church have served on VIM teams in Haiti, Biloxi, Bolivia, Iowa and Ulster County in recent years.

Contact Terry Temple at 266-4668

Retreats, Events and Publications for Spiritual Renewal and Growth

CONFIRMATION RETREAT

A weekend retreat for our Confirmation class members and their mentors at Camp Epworth.

Contact Joe Marrine at 229-2958

WOMEN'S RETREAT

Annual fall retreat

Contact Judy O'Neill at 876-0760

MEN'S RETREAT

Annual winter retreat

Contact Judy O'Neill at 876-0760

TACONIC RETREAT

A weekend ecumenical youth retreat with neighboring churches at the Taconic Retreat Center. This retreat is totally organized by church youth leaders.

Contact Joe Marrine at 229-2958

TRES DIAS

Ecumenical retreat organization for adults

For more information visit
www.mhtd.org

VIDEA NUEVA

Ecumenical retreat organization for youth

For more information visit
www.mhtd.org



YOUTH FOR CHRIST

This is an inspiring January weekend conference in Saratoga Springs for our high school youth, accompanied by adult leaders. The conference combines praise, worship, prayers, comedy, learning, fellowship and music.

Contact Joe Marrine at 229-2958

VACATION BIBLE SCHOOL

Provided for children one week in the summer.

Contact Joe Marrine at 229-2958

THE LENTEN DEVOTIONAL

This is a booklet published for the season of Lent. Church members are invited to contribute a spiritual message and personal story for one specific day during Lent. These spiritual stories are organized into a booklet and distributed to the congregation for daily prayer and reflection.

Fundraisers that Support Church Programs and Missions

ELECTION DAY LUNCH AND DINNER

A tradition for more than 100 years, this annual lunch and dinner is open to all on Election Day. Take-out meals are available as well.

Contact Maria Glover at 229-2497

SPRING BEEF DINNER

This is an annual spring event on a Saturday evening for the whole community that will be announced in the Messenger and the Sunday bulletins.



YOUTH FUNDRAISERS

Contact Joe Marrine at 229-2958

Varied and numerous fundraisers are held throughout the year by our youth for their program of activities.

Souper Bowl of Caring

A national program on Super Bowl Sunday, for youth to raise funds to care for the hungry in their local community.

Submarine sandwiches

Sold during the Super Bowl, and for our annual outdoor summer service at Linwood (raising funds for Youth for Christ)

Camp Hope Car Wash

Held on a Saturday in May

Camp Hope Stock Sale

Mother's Day Flower Sale

Memorial Day Food Booth

Pretzel Making Fundraiser

Shrove Tuesday Pancake Supper

"Faith means being sure of the things we hope for and knowing that something is real even if we do not see it."

HEBREWS 11:1



Sunday School, Bible Studies and Fellowship

Adult Sunday School Class - 1

Who: All adults are invited.
Betsy Allen leads the class.
What: Using "Feasting on the Word"
to study the Lectionary
When: Sunday mornings, 9:50 -10:50 a.m.
Where: The church library
Contact: Betsy Allen

Adult Sunday School Class - 2

Who: All adults are invited.
Paul and Judy Pearson lead the class.
What: Bible Beginnings
When: Sunday mornings, 9:50 -10:50 a.m.
Where: The fellowship hall (west side)
Contact: Paul and Judy Pearson

Confirmation Class

Who: 8th grade students
What: Our Confirmation class
curriculum
When: Sunday mornings, 9:50 -10:50 a.m.
Where: The education building
Contact: Joe Marrine

Lectionary Study

Who: All are invited.
What: Revised Common Lectionary Scriptures
When: Wednesday mornings, 10:30 - 11:45 a.m.
Where: Library
Contact: Pastor Kregg

Senior High Bible Studies

Who: 9th - 12th grade students
What: Bible study
When: Sunday mornings, 9:50 -10:50 a.m.
Where: The education building
Contact: Joe Marrine

Three-year-old to 7th grade Sunday School

Who: 3-year-old to 7th grade students
What: Our Sunday school curriculum
When: Sunday mornings, 9:50 -10:50 a.m.
Where: The education building
Contact: Joe Marrine

UMYF - United Methodist Youth Fellowship (Youth Group)

Who: Junior High (grades 6-8),
Senior High (grades 9-12)
What: Christian studies and fellowship
When: Saturday evenings, plus several
events for each group
Where: Education building, youth room
Contact: Joe Marrine, Director of Sunday School
and Youth Ministry, 229-2958

UMM - United Methodist Men

Who: All interested men are invited.
What: Bible studies / video series / book studies,
with a spiritual focus
When: Third Thursday evening of each month,
Prayer Breakfast on 1st Saturday each month
Where: Education building, youth room
Contact: Mike Grodesky, chairperson, 233-5364

Wednesday Morning Prayer Breakfast

Who: All are invited.
What: Discussion, prayer, sharing,
devotional reading
When: Wednesday mornings, 6:30 - 7:30 a.m.
Where: Eveready Diner
Contact: Les Leland, Ed Thompson,
Don VandenBroeck

Sunday School, Bible Studies and Fellowship *(continued)*

Wednesday Evening Bible Study

Who: All are invited.
What: Dessert, fellowship, Bible study (Psalms currently) or Christian book study, sharing of prayer requests and prayer
When: Wednesday evenings, 7:45 – 9:30 p.m.
Where: Members' homes on voluntary basis
Contact: Dave and Jane Coutts

Young Adult Sunday School Class

Who: All young adults are invited. Josh and Charlene Stratton lead the class.
What: Bible study
When: Sunday mornings, 9:50 -10:50 a.m.
Where: Education Building, Room 118
Contact: Josh and Charlene Stratton

Blessed Connections Ministries

Birthday-in-a-Basket Party

Who: Those interested in participating in a birthday party
What: Members of this group bring a birthday party, consisting of cake, juice, soda, and candles, in a basket, to members and friends who are shut-ins, in adult homes, and in nursing homes and to others in need.
When: At various birthday dates
Where: Meet at the church to car pool to the recipient's location.
Contact: Eilene Peeling, 229-5417 or efpeeling@juno.com

Card Ministry Team

Who: Those who enjoy sending cards and letters for various occasions
What: Cards and letters are sent to shut-ins, those in adult homes, nursing homes and hospitals. Those in need are given a little tender loving care. We share our Christian fellowship and God's love with others who might be lonely, out of the mainstream, or in need of a bit of cheering.
When: Are invited but not required to attend Blessed Connections Ministries meetings held three or four times a year.
Where: Meetings are in the library of the church when announced.
Contact: Rev. Arlene R. Wilhelm, 845-240-1690 or sophiaarw@yahoo.com

*"We all have different gifts,
each of which came because of the
grace God gave us."*

~ ROMANS 12:6 ~

Caroling

Who: Interested singers
What: Spreading Christmas cheer
When: Christmas season
Where: Nearby homes
Contact: Pastor Arlene Wilhelm at 240-1690

Blessed Connections Ministries (*continued*)

College and Military Connections

- Who:** Those interested in helping to pack boxes to be sent to our college students and those in the military; those interested in sending holiday cards
- What:** Treats and snacks are provided by the congregation and packed in boxes along with notes of encouragement. At holiday times (Valentine's, St. Patrick's, Easter, Halloween, and Thanksgiving) cards are sent.
- When:** Twice a year at exam time for college students and for folks in the military who are away from home.
- Where:** In the library at announced time
- Contact:** Lucille Dockery, 845-229-5471 or lucilledockery@yahoo.com

Cradle Roll

- Who:** Babies baptized in the church
- What:** A monthly newsletter of information about the faith development of their child is sent to parents from baptism until the age of three years old (when they graduate into Sunday School). Each year, a baptismal and birthday card are sent, along with a CD of songs/hymns.
- When:** TBA
- Where:** No regular meetings
- Contact:** Jan Billig, 229-0563 or Jim JanisB@verizon.net

Easter Love Baskets

- Who:** Members interested in filling and delivering an Easter basket of goodies to a shut-in.
- What:** Sign-up to visit the shut-in of your choice and fill and deliver an Easter basket of goodies.
- When:** During lent
- Where:** To be announced
- Contact:** Rev. Arlene R. Wilhelm

Friendly Visitors

- Who:** Members interested in making personal, friendly visits to those in need and who are willing to receive on-going training for these visits.
- What:** Personal visits and phone calls to those in need
- When:** This ministry team meets three or four times a year as the group decides.
- Where:** To be announced.
- Contact:** Rev. Arlene R. Wilhelm, 845-240-1690 or sophiaarw@yahoo.com

Intergenerational Fun Team

- Who:** Those interested in planning and conducting fun activities for the entire church family
- What:** Church wide birthday party, Advent pot luck lunch, other ideas
- When:** Activities are scattered throughout the year.
- Where:** To be announced.
- Contact:** Gloria Pease, 845-229-1513 or gloriadianne2945@yahoo.com

Ladies' Lunch Bunch

- Who:** Women who are interested in having lunch with other women of the church and their friends.
- What:** Lunching at area restaurants for fun and fellowship
- When:** 11:30 a.m., second Thursday of the month
- Where:** Meeting at the church and car pooling Rides can be arranged, if needed.
- Contact:** Doris Leland, 845-471-5258

Meals Team

- Who:** Those interested in providing and delivering a meal to those in need at their home.
- What:** Meals are prepared for anyone in need, e.g., just home from the hospital, busy with doctor appointments, taking care of someone, arrival of a new baby, just needing a meal.
- When:** As needed.
- Where:** To be announced.
- Contact:** Barbara Fritz, 845-233-4061 or edna29@aol.com

Blessed Connections Ministries *(continued)*

Monday Night Lights

Who: All are invited. If you would like to lead a class, please inform the Pastor.
What: Fellowship and classes, with varied offerings
When: Two 10-14 week sessions with dinner provided at 6 p.m. and classes at 7 p.m.
Where: Fellowship Hall and various classrooms
Contact: Bev Broadright and Pastor Kregg Gabor

Monday Night Potluck Dinners

Who: All are invited.
What: Potluck dinner followed by games and/or fellowship
When: During breaks in Monday Night Lights sessions, 6 p.m.
Where: Fellowship Hall
Contact: Bev Broadright and Pastor Arlene

Prayer Chain

Who: Those with the spiritual gift of intercessory prayer
What: Prayer requests on behalf of members and friends of the church are passed on to prayer chain callers and are also included in an e-mail chain.
When: No regular meetings. As needed.
Where: To be announced.
Contact: Bunnie Horton, 845-454-6980 or GramaBunnie@aol.com

Stitches from the Heart

Who: Those interested in knitting and crocheting for others
What: The group creates baby hats for area hospitals; scarves, hats, and mittens for the homeless and needy of the community; lap robes for the nursing homes; prayer shawls for the friends and members of our church.
When: 10:00 a.m., last Tuesday of the month or work from home
Who: Doris Leland, 845-471-5258

Thirty-Niners

Who: Senior citizens and interested available non-senior folks
What: Pot luck lunch and program
When: 12:30-2:00 p.m., second Tuesday of the month
Where: Fellowship Hall
Contact: Joan Gallante, 229-5255 or jagliltoto7@yahoo.com

Transportation

Who: Members interested in providing transportation for members
What: Provide transportation to doctor appointments, fellowship events, worship, etc.
When: Requests are received and provided as needed.
Where: To be announced.
Contact: Barbara Kimlin 229-8306

Travel Connections

Who: Members seeking a roommate for a trip, share a vacation, condo or take an organized trip together
What: To help members of our church family connect with others by sharing travel experiences and fellowship
Guidelines: All requests regarding travel connections must be submitted to the Blessed Connections Commission for approval and must be in accord with the United Methodist Church Book of Discipline. Trips that go through the church channels shall not be taken on major Holy Days. Whoever is organizing a trip must be a member of the church and must be on the trip. Individual insurance is required.
Contact: Beverly Broadright 486-4326 or Pastor Arlene 240-1690

*“Greet all the brothers
and sisters with Christian love.”*

THESSALONIANS 5:26



Sunday Morning Worship

Worship Schedule

Mid-September to Mid-June

- 7:45 a.m. Communion Service
- 8:45 a.m. Contemporary Music Service
- 9:50 a.m. Sunday School
- 11:00 a.m. Traditional Music Service

Mid-June to Mid-September

- 9:30 a.m. Blended Service

Choirs and Music Groups

Sanctuary Choir

Sings each week at 11 a.m. traditional service, with rehearsals Wednesday at 7:30 p.m

Contact Heidi Schnarr (860) 508-4642

Contemporary Praise Band

The contemporary praise band provides music for our 8:45 a.m. service. Rehearsals are on Mondays at 7:00 p.m.

Contact Terri Hein 473-4182 or Christine Brand 266-4095

Chimes and Instrumentalists

These groups perform at special services.

Child Care

During the contemporary church service, Sunday School, and the traditional church service, child care is provided by the nursery directors in both the crib room and the toddler room. During the summer, (June, July, August), there is only one church service (no Sunday School). Child care is provided by the nursery directors in both the crib room and the toddler room. Alternately, there is a rocking chair in the narthex if a parent wishes to sit quietly with a child and listen to the church service, or watch the service when available on the flat screen.

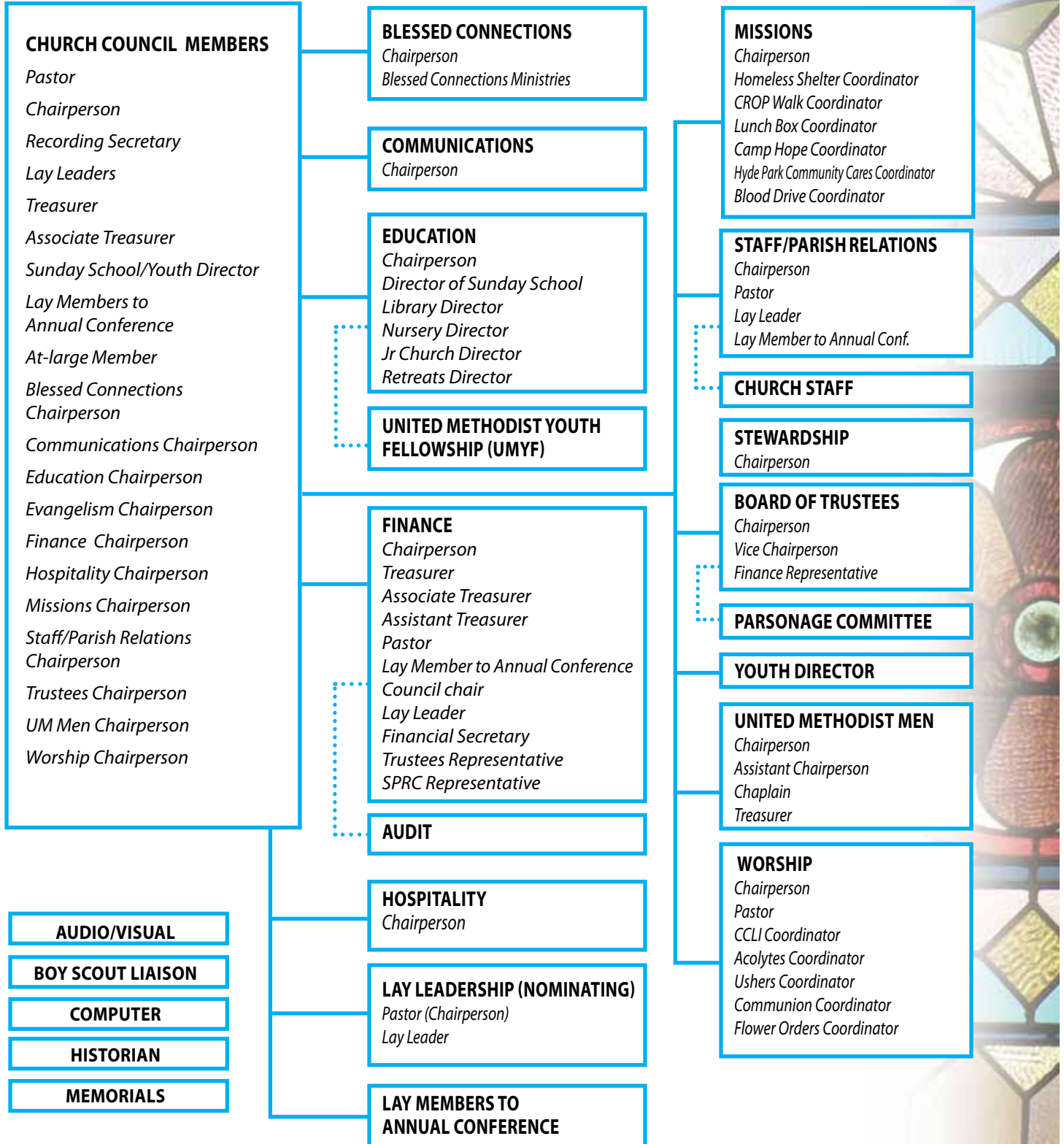
Greeters and Ushers

Greeters and ushers are church members who serve during Sunday and special holiday services. Greeters greet and welcome visitors and church members on arrival, engage visitors in conversation, and introduce them to the pastor and others. Ushers distribute bulletins, collect prayer cards, gather the offering, and assist with communion. After the service, ushers clean up and reorganize materials in the pews. Claire Nuttall, 229-0684.

Our Connection to the United Methodist Church

ORGANIZATION	EVENTS (SESSIONS)	LEADERSHIP
United Methodist Church	General Conference (GC) (every 4 years)	GC (legislative branch) Council of Bishops (executive branch) • Meets 2 times per year, all bishops Judicial Council (judicial branch) • 9 members
New York Annual Conference (NYAC) • 500 churches (held annually) • Hudson Valley, Western CT, NYC, Long Island	Annual Conference	Bishop Cabinet (6 District Superintendents)
New York/Connecticut District • 77 churches)		District Superintendent (DS)
United Methodist Church of Hyde Park	Charge Conference (held annually) DS presides	Pastor (member of NYAC) Church Council

Our Church Organization



Church Conference, Council, Commissions and Committees

Church Conference

The Book of Discipline of The United Methodist Church requires that each local church hold a church or charge conference annually.

This annual conference (church or charge) directs the work of the church and gives general oversight to the church council. It reviews and evaluates the mission and ministry of the church in addition to other tasks, as appropriate, such as setting salaries for the pastor(s), electing church officers, and recommending candidates for ministry.

The annual church, or charge, conference is typically held one day in the fall or early winter, with the date set by our district superintendent.

The difference between a church and a charge conference is:

1. The charge conference is the basic governing body of each United Methodist local church and is composed of all members of the church council.
2. A church conference invites broader participation of the members of the congregation beyond just the church council members, in that all members of a local United Methodist church are invited to attend and are extended the privilege of voting.

All members of the charge or church conference must be members of the local church. The United Methodist Church of Hyde Park follows the church conference structure. In practical terms, the church, or charge conference is the governing body of the church one day a year, while the Church Council – see the following section – is the governing body for the remainder of the year.

Church Council

This group of leaders plans and carries out programs that fulfill our church's nurturing, outreaching, and witnessing ministries. The Church Council leads the visioning and strategic planning process to guide our congregation toward fulfilling its mission of making disciples of Jesus Christ. The Council oversees the management and programming of the church, and serves as the primary administrative body of the charge conference. It approves the church budget and ensures that the financial needs of the church are met, and makes recommendations for the compensation, benefits, and housing for the pastor(s) and other church staff. The church council typically meets once every month except during the summer.

Audio Visual Committee

This committee is responsible for obtaining and operating the audio visual equipment during church services and other events. DVD recordings of services are available to shut-ins and church members.

Audit Committee

This committee is responsible for auditing the books and financial practices of the church and making sure that church funds are accounted for, using generally acceptable accounting practices.

Blessed Connections Commission

Blessed Connections Commission envisions, plans, and oversees activities that connect the membership and friends of the church in care and fellowship. It also oversees the Blessed Connections Ministries. Some of the ministries are: prayer, visits, cards, birthday parties, meals, transportation, and pot luck lunches and suppers.

Church Conference, Council, Commissions and Committees (*continued*)

Communications Committee

This commission communicates church-sponsored events and news to Hyde Park and the surrounding area via local media sources (newspapers, radio, TV, internet), as well as maintaining our church web site at www.hydepark-umc.org.

Computer Committee

This committee is responsible for the computer systems that belong to the church. The committee plans for, obtains and maintains the necessary hardware and software.

Education Commission

This commission oversees the Christian education of the church family. It works with the pastor and director of Sunday school/youth ministry to oversee, plan and implement programs for Sunday school, adult education and Bible studies, the library and nursery sitters. It also works on special events such as Vacation Bible School. The Education Commission meets monthly.

Evangelism Commission

The purpose of the HPUMC Evangelism Commission is to invite, welcome and encourage all people who seek to know Jesus Christ and grow in their relationship with Him. Focal points include welcoming through our greeter and usher programs, packets for new visitors, fellowship time and coordinating coffee hour on Sunday mornings. Another emphasis is community outreach through signs, brochures and church activities. This commission hopes to provide opportunities for church membership through classes, mentors and follow-up with visitors and regular attendees.

Finance Committee

The committee oversees the general finance ministry of the church in accordance with instructions from the Church Council. The Finance Committee works with other committees to establish the yearly budget, reviews monthly income/expenses for compliance with the approved budget, coordinates with the Audit Committee regarding the annual audit of all church financial records and works with the Stewardship Commission to coordinate an overall plan for finance ministry. This committee includes a chair, financial secretary, treasurer, assistants, members and ex-officio representatives. Members are elected annually. The Finance Committee meets once a month.

Hospitality Committee

The Hospitality Committee maintains the inventory of paper goods and kitchen supplies needed for general church use and occasionally organizes receptions for special church-related meetings, receptions, and events.

Lay Leadership Committee (Nominating)

Chaired by the pastor, this committee recommends and nominates persons for administrative and program areas. Its mission is to identify, develop, deploy, evaluate and monitor Christian spiritual leadership. The committee recommends officers and leaders to the annual charge conference. The committee generally meets two or three times a year.



Church Conference, Council, Commissions and Committees (continued)

Memorials Committee

The Memorials Committee is responsible for determining how funds given in memoriam and or celebration are to be used. The committee is also responsible for maintaining the church's memorial book, which is on display in the narthex. This five member committee meets occasionally to determine how funds are to be used.

Missions and Social Concerns Commission

The Missions and Social Concerns Commission of our church reaches out to those in need on a local, national and international level to provide for their needs in the name of Christ. Working through the United Methodist Church, we are able to focus our congregational resources where they are most needed. The commission also supports numerous local agencies by providing volunteers as well as donations of food, items and finances to programs such as the Poughkeepsie Lunchbox, Hudson River Housing, Dutchess Outreach, Rebuilding Together Dutchess County, Hyde Park Community Cares programs at Easter, Thanksgiving, Christmas and many others.

Parsonage Committee

The Parsonage Committee is responsible for seeing that the pastor's home is properly maintained. Through ongoing dialogue with the parsonage's residents and a once a year walkthrough inside the parsonage, the committee reviews what has been done, defines what needs to be done and coordinates completion of the defined tasks. This committee meets once a year during the walkthrough of the parsonage. (The exterior is maintained by the trustees.)

Staff/Parish Relations Committee

This is the personnel committee of the church. It relates directly to staff members, both ordained and lay personnel, works with staff to consider goals and objectives for the church, establishes salaries/benefits, and is responsible for hiring, supporting and evaluating staff. It also deals with general church/staff issues, and works to promote unity in the church between the staff and the congregation. Nine members are elected to a rotating three year term. This commission meets monthly.

Stewardship Commission

The Stewardship Commission is responsible for year-round education of the congregation with regard to using our gifts for God's service. The largest task for the commission is the annual fall pledge campaign.

Trustees, Board of

Trustees are the legal caretakers of our church responsible for the overall physical operations, building use, maintenance and care of our facility and properties (parsonage, Joy and Neff houses). Trustees solicit and approve contracts for work/maintenance, handle insurance issues, receive bequests and oversee those funds. Nine members are elected on a rotating three year term. Trustees meet once a month.

Worship Commission

The Worship Commission's goal is to offer worship experiences that are meaningful, spiritually inspirational and beautiful – a gift of ourselves to God. The commission coordinates the ushers and acolytes (altar servers) and decorates the sanctuary for weekly service and special holidays. The commission also manages the budget for the music programs and other details including pew cards, attendance sheets and bulletins. This commission meets once a month.

Lay Leadership 2013

Church Council

CHAIRPERSON	<i>Steve Ackerman</i>
RECORDING SECRETARY	<i>Dale Meck</i>
PASTOR	<i>Kregg Gabor</i>
TREASURER	<i>Cornell Dawson</i>
ASSOCIATE TREASURER	<i>Russ Wilmot</i>
SUNDAY SCHOOL / YOUTH DIRECTOR	<i>Joe Marrine</i>
BLESSED CONNECTIONS	<i>Bev Broadright</i>
COMMUNICATIONS	<i>Dale Becker</i>
EDUCATION	<i>Rebecca Fleet</i>
EVANGELISM	<i>Claire Nuttall</i>
FINANCE	<i>Ron Brand (interim)</i>
HOSPITALITY	<i>Judy O'Neill</i> <i>Janet Talleur</i>
LAY LEADERS	<i>Pete Hein and Terri Hein</i>
LAY MEMBERS TO ANNUAL CONFERENCE	<i>Steve Allen</i> <i>Betsy Allen</i> <i>Pete Hein</i>
MISSIONS	<i>Terry Temple</i> <i>Barbara Wells</i>
STAFF/PARISH RELATIONS	<i>Dave Coutts (interim)</i>
TRUSTEES	<i>Bob Rua</i>
UNITED METHODIST MEN	<i>Mike Grodesky</i>
WORSHIP	<i>Steve Allen</i>
AT-LARGE MEMBER	<i>Tracy Fleet</i>



Lay Leadership 2013

(continued)

COMMISSIONS, COMMITTEES, OTHER

Audio Visual

Chairperson

Don VandenBroek

Mike Grodesky
Les Leland
Tom Mulqueen
Barry Willhite
Julius Jones
Bob Michie
Pete Hein
Kathy Landers

Audit Committee

Chairperson

Dawn Lovell

Tigran Chatrychan

Blessed Connections

Chairpersons

Bev Broadright
Rev. Arlene Wilhelm

Jan Shufelt
Deb Hutt
Barbara Sauls
Joan Neville
Barb VandenBroek
Linda Gray

*“Above all clothe yourselves
in love which binds us all together
in perfect harmony.”*

COLOSSIANS 3:14

Blessed Connections Ministries

ADULT CHRISTMAS PARTY

ANNIVERSARY CALLS

Eileen Lawlor

BIRTHDAY CALLS

Gus Talleur

BIRTHDAY PARTIES

Eilene Peeling

BLANKETS FOR NEWBORNS

Sharron Smith

BULLETINS AND NOTES TO SHUT-INS

Bev Broadright

CARDS

Norma Mahler
Joan Gallante
Elyse Scott
Eilene Peeling

CHRISTMAS CAROLING

Rev. Arlene Wilhelm

COLLEGE AND MILITARY CONNECTIONS

Lucille Dockery

CRADLE ROLL

Jan Billig

DVD DELIVERY

TBA

FLOWER DELIVERY

Eileen Lawlor
Lucille Dockery

FRIENDLY VISITORS

Laura Beneway
Linda Gray
Lisa Tomesch
Doris Stratton
Doris Leland
Les Leland
Joan Gallante
Lucille Dockery
Barbara Sauls
Kathy Landers
Ed Thompson

Lay Leadership 2013

(continued)

INTERGENERATIONAL EVENTS

(FUN TEAM)

Gloria Pease
Don Bernard
Patty Sorrentino
Kyle Tarkos
Rebecca Tarkos

JOURNEY THROUGH LOSS

Lisa Tomesch

LENTEN DEVOTIONAL

LUNCH BUNCH

Doris Leland
Gwen Sperry
Doris Stratton
Norma Mahler

MARK-IT PLACE MEALS

Barbara Fritz

MONDAY NIGHT LIGHTS

Bev Broadright
Pastor Gregg Gabor

PRAYER CHAIN

Bunnie Horton

STITCHES FROM THE HEART

Doris Leland

TAPE RECORDING AND DELIVERY

Bob Michie

THIRTY-NINERS

Joan Gallante
Joan Charlebois
Mary Kirschner
Janet Daley
Norma Mahler
Minnie Jackson
Ginny Trautmann
Ernie Trautmann

TRANSPORTATION

Barbara Kimlin

TRAVEL CONNECTION

Beverly Broadright

Boy Scout Liason

Greg Lacey

Communications

Les Leland
Valerie DuBois
Dale Meck
Dave Meck

Computer

Julius Jones
George Hutt
Kathy Landers

Education

Chairperson

Rebecca Fleet

Judy Pearson
Rebecca Fleet
Lynne Morrell

Sunday School/Youth Director

Joe Marrine

Junior Church

Dineen Cappuccilli

Library

Marion Rua

Nursery Director

TBA

Retreats

Judy O'Neill



Lay Leadership 2013

(continued)

Evangelism

Chairperson
Claire Nuttall

Lucille Dockery
Sara Gulbrandsen
Julius Jones
Val duBois
Fred Broadright

Finance

Chairperson
Treasurer
Cornell Dawson

Associate Treasurer
Russ Wilmot

Financial Secretary
Chuck Pickering

Assistant Financial Secretary
Sharron Smith

Assistant Treasurer/SPRC Representative
Don Bernard

Church Council Chairperson
Steve Ackerman

Trustee Representative
Betsy Allen

Lay Leader
Terri Hein

Lay Member to Annual Conference
Steve Allen

Historian

Maria Glover

Hospitality

Chairpersons
Judy O'Neill
Janet Talleur

Gwen Sperry
Rebecca Fleet
Norma Mahler
Pam Bendyk
Denise Ackerman
Barb Fritz

FUNERAL RECEPTION COORDINATORS

Karen DePaola
Bunny DeGroot

Lay Leadership (Nominating)

Chairperson
Rev. Gregg Gabor

Class of 2013
Steve Allen
Maria Glover

Class of 2014
Les Leland

Class of 2015
Lucille Dockery

Lay Leader/Member
Terri Hein

Lay Leadership 2013

(continued)

Lay Servants

Steve Allen (Certified Lay Servant)
Maria Glover (Certified Lay Servant)
Terry Temple (Certified Lay Servant)

Memorials

Chairperson **Bob Peeling**

Earl DeGroot
Dottie Hughes
Gwen Sperry
Bunnie DeGroot

Calligraphy **Janet Braatz**

Missions and Social Concerns

Chairpersons **Terry Temple** **Barbara Wells**

Mike Temple
Ruth Jones
Barbara Alstadt
Barbara Fritz
Kelly Alexander
Kelly Dandar
Gina Lacey

HOMELESS SHELTER VOLUNTEERS

Karen Becker

HOMELESS SHELTER FOOD

Jenn Jackson

CROP WALK

Regina Calabro

LUNCH BOX

Sara Gulbrandsen

CAMP HOPE

Joe Marrine

HYDE PARK COMMUNITY CARES

Julius Jones

BLOOD DRIVE

Carla Cruger

Staff/Parish Relations

Chairperson **Dave Coutts (interim)**

Lay Leader **Pete Hein**

Lay Member to **Annual Conference** **Steve Allen**

Class of 2013

Maria Glover
Bob Dandar
Don Bernard

Class of 2014

Greg Lacey
Linda Gray

Class of 2015

Dave Coutts
Pauline Johnson
Lucille Dockery

Trustees

Chairperson **Bob Rua**

Class of 2013

Betsy Allen, Vice President
Ethel Armbrust
Buddy Nuttall

Class of 2014

Ed Kirschner
Bob Rua
Dudley Simmons

Class of 2015

John Thomas
Gary Collins
Earl DeGroot



Lay Leadership 2013

(continued)

Parsonage Committee

Buddy Nuttall
Maria Glover
Pam Bendyk
Marge Horton
Janet Talleur
Duane Oetjen
Fred Broadright
Ed Kirschner

United Methodist Men

Chairperson
Mike Grodesky

Assistant Chair
Greg Lacey

Treasurer
Mike O'Neill

Chaplain (Prayer Advocate)
Paul Pearson

*"Love never gives up,
never loses faith, is always hopeful, and
endures through every circumstance."*

COLOSSIANS 13:4

Worship

Chairperson
Steve Allen

Carol Mulqueen
Tom Mulqueen
Leslie Grodesky
Wendy Simmons
Karen DePaola
Dot Triola
Cathy Stanton
Joan Neville
Gussie Wilmot
Carole Pickering
Greg Lacey
Chris Brand
Bob Dandar
Jane Coutts
Pastor Kregg Gabor
Terri Hein

CCLI Compliance
Chris Brand

Acolytes
Kit Hardy

Ushers
*Karen Becker
Joan Gallante*

Communion
Susan Alexander

Contemporary Service Music Directors
*Chris Brand
Terri Hein*

Flower Orders
Kathy Gregory

Our Staff

STAFF MEMBER	POSITION	LIAISON*
Kregg Gabor	Pastor	Dave Coutts
Cornell Dawson	Church Treasurer	Pauline Johnson
Russ Wilmot	Associate Church Treasurer	Dave Coutts
Arlene Wilhelm	Minister of Pastoral Care	Linda Gray
Joe Marrine	Director of Youth Ministries	Bob Dandar
Joe Marrine	Sunday School Director	Bob Dandar
Dineen Cappuccilli	Junior Church Coordinator	TBA
TBA	Nursery Director	Lucille Dockery
Tracy Fleet	Sexton (Maintenance Person)	Maria Glover
Lorraine MacAulay	Administrative Assistant	Don Bernard
Kathy Gregory	Office Assistant	Don Bernard
Heidi Schnarr	Music Director	Greg Lacey

**Staff liaisons are volunteers who support staff members, facilitate communication between staff and the congregation, and approve payroll for hourly employees.*

Staff Position Descriptions

Pastor

The pastor's responsibilities fall into four main categories, described as Word, Sacrament, Order, and Service. This fourfold ministry includes preaching, worship, studying and applying Scripture to daily life, celebrating the Sacraments and developing congregational leaders. The pastor also attends to the day-to-day business of the church, cares for the spiritual and temporal needs of the congregation and community. The pastor models and leads the congregation in acts of compassion, mercy and justice. The pastor nurtures the congregation for mission and ministry in the world as faithful disciples of Jesus Christ.

Church Treasurer and Associate Church Treasurer

The church treasurer and associate church treasurer are responsible for the day to day disbursement, tracking, and reporting of funds. They manage the checking accounts to meet the financial obligations of the church.

Minister of Pastoral Care

The minister of pastoral care works with the pastor in developing and coordinating volunteers for visitation as well as doing visitation of shut-ins and others as directed by the pastor.



Staff Position Descriptions

(continued)

Youth Director

The youth director plans and coordinates youth fellowship activities for both junior and senior high students to promote Christian based values and learning for all youth. The director recruits new members and encourages the growth of the membership in the youth group.

Sunday School Director

The Sunday school director works with the pastor and the Education Commission in developing and coordinating the Sunday School program for all ages for the church, and oversees and supervises the Sunday School teachers.

Nursery Director

The nursery director provides for the meeting of a variety of child care needs on Sunday mornings, during worship services and Church School, advising and directing volunteers, especially teens, as needed.

Music Director

The music director leads weekly music for church services in both the capacity as organist and choir director to ensure that the expression of music is an integral part of the worship experience. The music director is responsible for choosing appropriate music in conjunction with the pastor and for rehearsing choir members and performers. The ultimate goal is to enhance and support worship through the spiritual expression of music beautifully presented and performed.

Sexton (Maintenance Person)

The sexton is responsible for cleaning the sanctuary and education building. The sexton is also responsible for maintaining the outside grounds especially during inclement winter weather. Thermostat adjustment, set up for Sunday's church school, and for meetings, suppers, etc. are also part of the responsibilities.

Administrative Assistant Office Assistant

The administrative assistant performs many organizational and clerical tasks for the church, and assists the two pastors and other staff. Regular duties include preparation of worship bulletins, answering the phones and taking messages, receiving prayer chain messages, handling mail, scheduling church property use, maintaining the church calendar, coordinating, preparing and mailing the monthly newsletter, keeping church records, and other duties. The office assistant performs these tasks in the absence of the administrative assistant.

*“But let justice flow like a river,
and let goodness flow like a stream
that never stops.”*

AMOS 5:24

Glossary

Annual Conference

Meets once a year to represent United Methodists in a particular geographical area. All clergy are members. Each local church or charge elects at least one lay member to Annual Conference so that lay members equal clergy members. The Annual Conference is responsible for accepting goals and approving the budget for the work of the United Methodist Church in its area. It is also responsible for approving persons for ordinations as clergy and consecration as diaconal ministers.

Appointment

The pastoral charge or other position in the church to which an ordained ministerial member is assigned by a bishop, or between sessions of the Annual Conference, by a district superintendent.

Apportionment

Apportionments are the way in which local churches combine their financial resources to enable the greater church's vision for mission and ministry at every level of the United Methodist Church. "Apportioned giving" is a term which describes how a portion of the money given to the church each week is divided and distributed "outside the walls" of our local church. Of every dollar collected at Methodist churches, 84.3 cents is used in or by local churches, 12.4 cents supports regional ministries and 3.3 cents supports general church ministries.

Bishop

Responsible for the work and oversight of the church in a particular Annual Conference or conferences. The bishop, in consultation with district superintendents, parishes and local churches, appoints pastors to local churches.

Book of Discipline of The United Methodist Church

Contains the rules and laws governing the United Methodist Church. It also contains information about the church's history, some theological statements, the Social Principles, and the Social Creed.

Cabinet

The resident bishop and the district superintendents of an Annual Conference acting together as a body, primarily in the process of appointment of pastors to the churches in that Conference.

Charge Conference

A meeting of the local church that includes every member of the church's governing body (such as a church council) as well as clergy appointed to serve that church. It meets at least once a year, usually in the fall, to review church goals and objectives, elect new church leaders, set clergy salaries, and recommend and continue persons for candidacy. A charge conference is typically facilitated by the district superintendent who oversees that congregation.

CCLI: Christian Copyright Licensing International

An organization that provides a Church Copyright License which is a contractual agreement with songwriters and publishers from around the world. For an annual license fee, a church receives legal authorization to copy more than 300,000 songs for congregational use. Various aspects of copyright law are covered, for example, the projection of lyrics onto a screen. The same copyright laws apply for using sheet music or the hymnals that were purchased. A "lyric reprint" license is required by Federal copyright law to compensate the songwriter(s) and publisher(s) for using their product.



Glossary *(continued)*

District Superintendent

Oversees the work of churches within a geographic region called a district. District superintendents within an Annual Conference comprise the bishop's cabinet. The bishop makes the appointments of pastors to churches.

Elder

A clergyperson who has completed preparation for the ministry of Word, Sacrament, and Order; has been elected into full connection by an Annual Conference, and has been ordained as an elder.

General Conference

Meets every four years for the purpose of speaking and acting on behalf of the national/international body of the United Methodist Church. Delegates are elected by Annual Conferences. Half the delegates are clergy and half are laypersons.

Itinerancy

The system of The United Methodist Church by which clergy are appointed to their charges by the bishop and are under discipline to accept such appointments.

Lay Leader

Charged with fostering the role of the laity in the mission of the church, both through ministries of the congregation and in their homes, workplaces, and neighborhoods. Is involved in training opportunities to develop a growing understanding of the church and alerting the church to opportunities for more effective ministries throughout the laity. Meets regularly with the pastor to discuss the state of the church and its needs for ministry. Member of the Church Council, Committee on Nominations (or Lay Leadership), Finance Committee, and Staff Parish Relations Committee.

Lay Member to Annual Conference

Represents the congregation to the Annual Conference, and interprets the work of the Annual Conference and the global United Methodist Church to the congregation.

Lay Servant (formerly lay Speaker)

A professing member of a local church who is "ready and desirous to serve the Church and who is well informed on and committed to the Scriptures and the doctrine, heritage, organization and life of The United Methodist Church." A lay servant receives specific training to develop skills in witnessing to the Christian faith through spoken communication, church and community leadership, and care-giving ministries. Lay servants, both local church and certified, must submit an annual report to their charge conference and be reappraised annually.

Local Pastor

A lay person approved by the clergy membership in full connection with an Annual Conference and authorized to perform all the duties of pastor, including the sacraments, while assigned to a particular charge under the specific supervision of a counseling elder, subject to annual renewal.

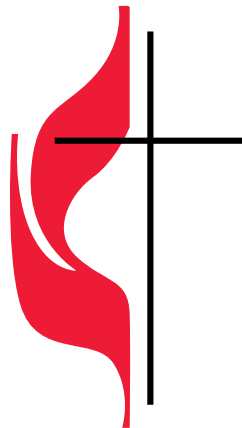
Pastoral Charge

One or more churches that are organized under, and subject to, the Discipline, with a single Charge Conference, and to which a clergyperson is, or may be, duly appointed or appointable as pastor in charge.



*Faith is the
assurance of things hoped for,
the conviction of things
not seen.*

HEBREWS 11:1

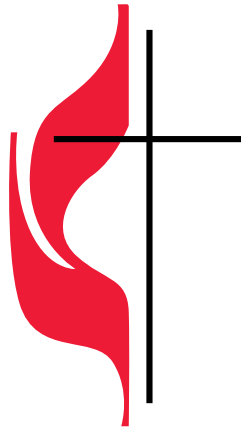


QUESTIONS OR COMMENTS ABOUT THIS DIRECTORY?

Contact

*Steve Ackerman at stevea@sailleackerman.com
Maria Hoskins at maria_e_hoskins@yahoo.com
Carole Pickering at capckp@yahoo.com*

Windows into the
UNITED METHODIST CHURCH OF HYDE PARK



THE UNITED METHODIST CHURCH OF HYDE PARK

1 Church Street • Hyde Park, NY 12538
tel: (845)229-2114 • fax: (845)229-2114
e-mail: HPUMC@verizon.net

Pastor Kregg Gabor

WORSHIP SCHEDULE

September to Mid-June

7:45 a.m. - Communion Service

8:45 a.m. - Contemporary Music Service

9:50 a.m. - Sunday School

11:00 a.m. - Traditional Music Service

Summer Schedule

Sunday Worship 9:30 a.m.

PUBLISHED NOVEMBER 2013